

41945 Big Bear Boulevard
Big Bear Lake, California 92315

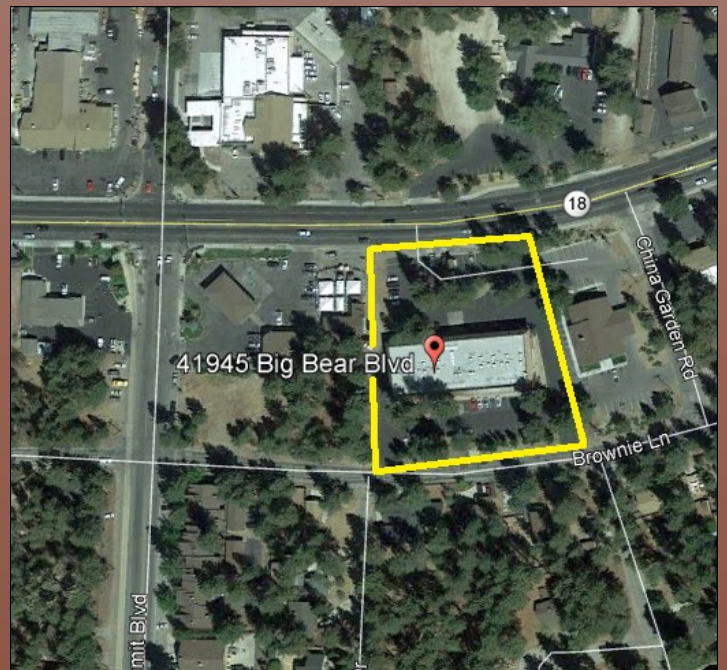


Office/Retail Space **FOR LEASE**



Available: Suite 41965 (1,344 sf)
Rental Rate: \$1.00 psf
(+ \$.35 psf NNN)
Lease Type: NNN
Term: 1-5 years
Possession: Immediate

- Well-maintained, multi-tenant office and retail building
- Centrally located on busy Big Bear Boulevard just East of Summit Boulevard
- Located at the base of Southern California's premier ski resort, Snow Summit
- 41965 unit ideal for retail.



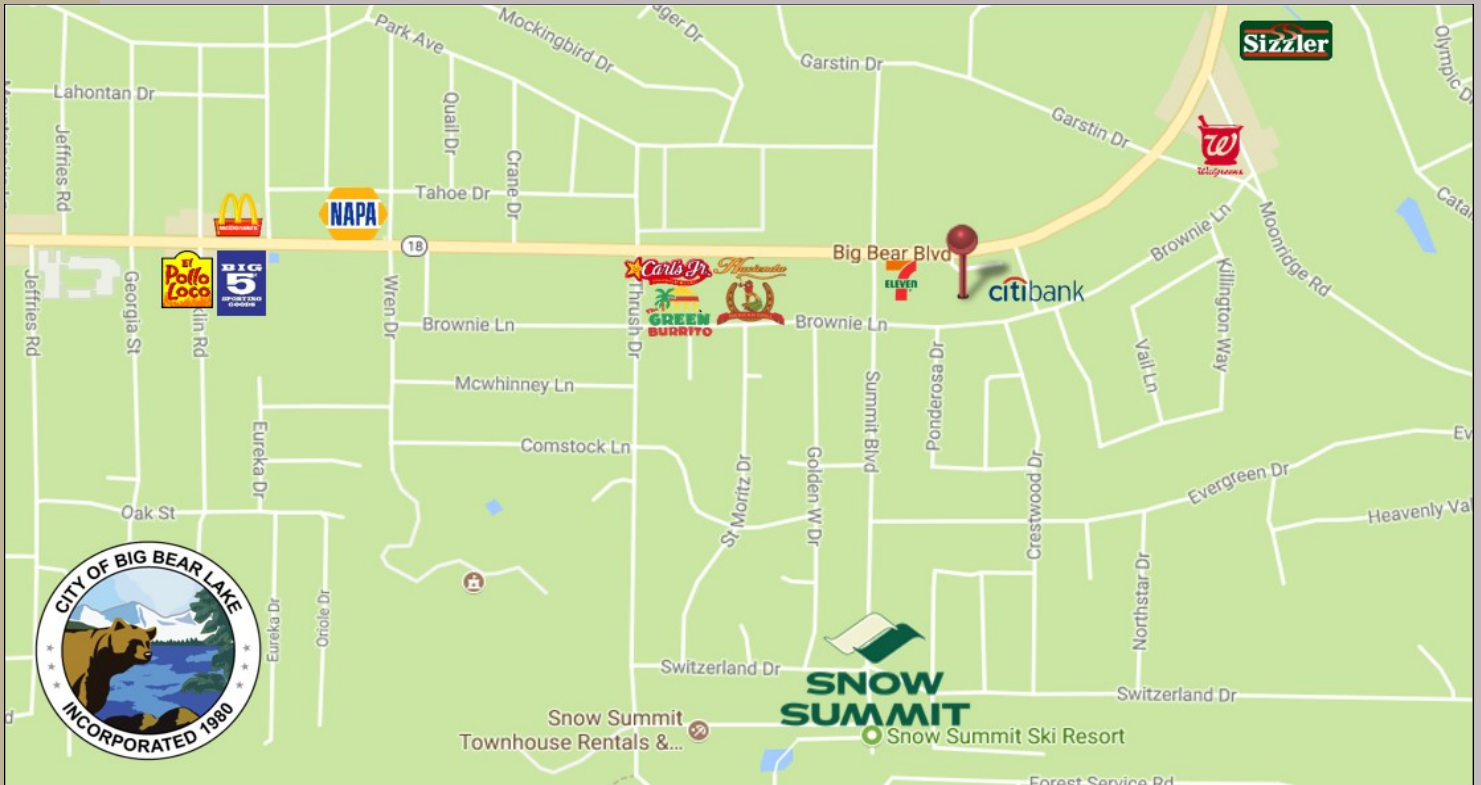
THE RENKEN COMPANY
492 West Foothill Boulevard, Claremont, CA 91711
Phone: 909.482.1060 | Fax: 909.482.1070 | WWW.RENKENCO.COM

Information contained herein has been obtained from reliable sources, however is not guaranteed

41945 Big Bear Boulevard
Big Bear Lake, California 92315



Office/Retail Space **FOR LEASE**



CITY OF BIG BEAR LAKE, CALIFORNIA

For More Information Contact:

Bobby Del Real or Kelly Arft

Phone: 909-482-1060

Fax: 909-482-1070

Email: bobby.delreal@renkenco.com

Email: Kelly.arft@renkenco.com

www.renkenco.com



THE RENKEN COMPANY